



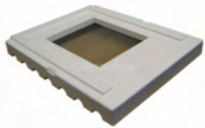
Betterbee 8 Meader Road Greenwich, NY 1-800-632-3379 [www.betterbee.com](http://www.betterbee.com)

## Beemax Assembly and Information

To protect from damage by UV light, paint all surfaces of BeeMax hives exposed to the weather. Use two coats of exterior latex paint. In general we recommend lighter colors. Use a waterproof wood glue such as Tite-Bond or Gorilla Glue when gluing the boxes. It is important to let all your painted and glued boxes air thoroughly for at least 24 hours so there are no odors when you install the bees. Any Questions? Call us at 1-800-632-3379 M-F 9AM-5PM Sat. 9AM-1PM

- **Beemax Bottom Board with built in Varroa Screen:**

The bottom board has a built-in varroa screen. You should plan to place the bottom board and hive on an elevated stand. The bees will be drier, have better ventilation and be less susceptible to predators like skunks and raccoons. No assembly is required.

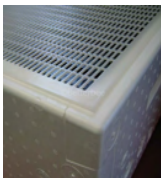


- **Beemax Deep Hive bodies:**

The Hive bodies (also known as 'brood chambers') will each include 2 shorter ends and 2 longer sides. The (shorter) ends will have 3 ears on each side while the longer sides will have 2 ears on each end so that all sides fit together like a puzzle with the tabs sliding into place to build the box. You'll notice a little recycling arrow imprint on the outer parts of the boxes (on the same side as the handle grips); make sure that these triangular imprints are on the outside of the box facing up. When you are putting the sides together it's a good idea to coat the ears with some Polyurethane Glue for added strength. You can just slide the pieces together and let the glue dry then paint the **outside** of the boxes.



- **Plastic Queen Excluder:**



The queen excluder is optionally used to restrict the queen from laying in the honey the supers. It is usually placed between the (Deep) Hive Bodies and the (Medium) Honey Supers. Worker bees can pass through the spaces in the excluder but the queen cannot. It is usually not used until all combs are drawn out. Some beekeepers use it and some do not.

- **Beemax Medium Honey Supers:**



The Medium Honey Supers go together just like the Deep Hive Bodies, the only difference being they are approximately 3 inches shorter than the Hive Bodies. Again, only paint the **outside** and use Polyurethane Glue on the joints.

-



**Betterbee**<sup>™</sup>  
Beekeepers Serving Beekeepers<sup>™</sup>

Betterbee 8 Meader Road Greenwich, NY 1-800-632-3379 [www.betterbee.com](http://www.betterbee.com)

**Plastic Frame Rests (for Deep Hive Bodies AND Medium Supers):**

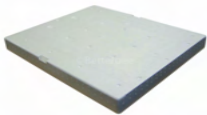
Each Hive Body and Medium Honey Supers uses 2 plastic frame rests. If you look along the inside (just below the notch) on the short sides of your assembled boxes (Deeps and Mediums), you'll see a groove just below the notch running along the inside of the box. This is where you want to slip the shorter side of the L-shaped insert. The long side points up for the frames to rest on.

- **Wooden Inner Cover:**



The inner cover has one side with a deep recess and notch. The side with deep rim and notch should face up during the summer season and down for the winter. The deep rim provides enough space for feeding pollen patties without needing a shim. The notch on the deep edge provides good winter ventilation as well as an upper winter entrance. Do not paint the inner cover.

- **Telescoping Outer Cover:**



This piece goes on the very top and has a lip that hangs over your upper most box. You want to do two coats of paint on the outside of this cover (leave the underside bare!) When you have your hive all painted and ready to go, we recommend the use of a ratchet strap around the hive to make sure the wind doesn't blow off the Telescoping Outer Cover. (Some beekeepers will use bricks or stones to weight down the outer cover. Just be sure to add plenty of weight to hold the cover down.)

- **Wood or Plastic Frames:**

Wood or Plastic Frames will fit in the corresponding sized hive bodies or supers. They rest on the white plastic frame rests so as to not wear down on the Beemax material when they get full of honey comb. We feel that by adding extra beeswax to the the plastic foundation or frames the bees will accept them as readily as wax foundation. You can purchase yellow beeswax, melt it down, then paint it onto the frames with a foam paintbrush. If you don't have time we can do it for you. Our waxing service coats the plastic frames or foundation with additional wax.

- **Optional Varroa Support Shim and Tray:**

The varroa support shim is placed under the Beemax Bottom Board with the notch towards the back of the hive. This allows you to slide a varroa monitoring tray under the screened bottom board to monitor varroa mite levels. The Support Shim should be painted.