

Betterbee®

Beekeepers Serving Beekeepers

Lyson Hand Crank Extractor Gearbox: How to Adjust Engagement

Use these instructions if you turn the extractor crank, but the extractor does not turn. These instructions apply to multiple styles of extractor gearbox; see below.

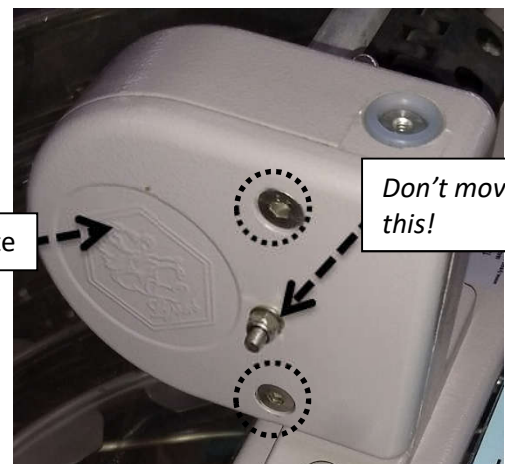
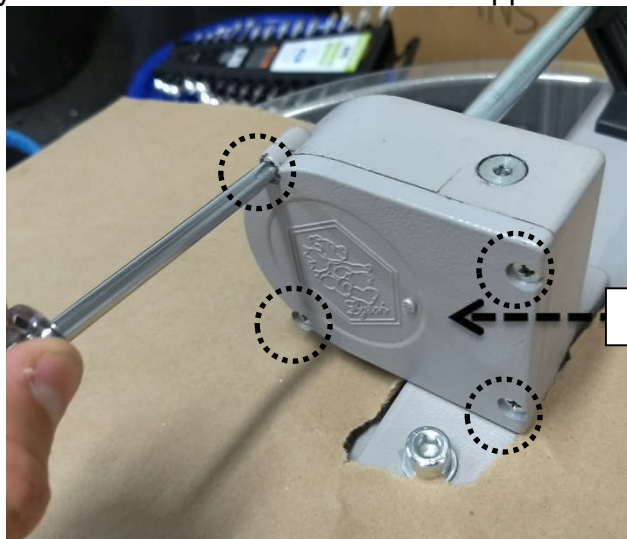


Style A

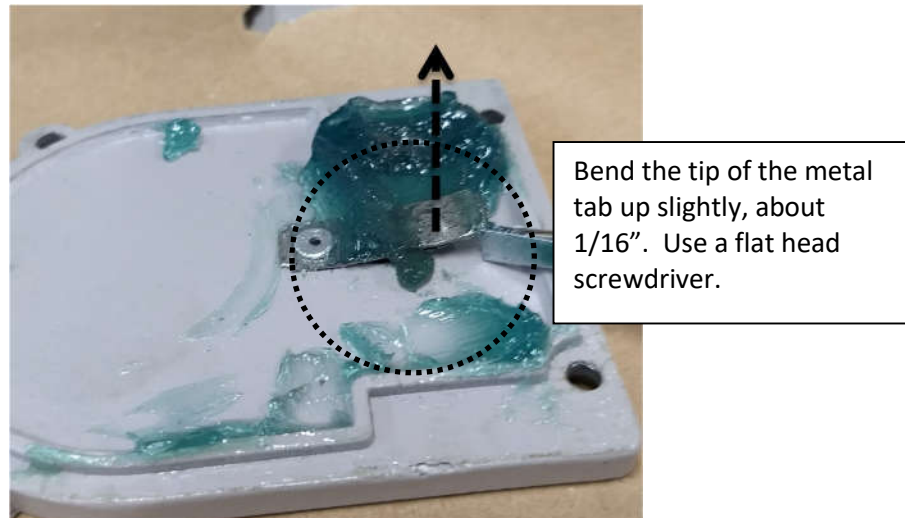


Style B

1. If you have a style A gearbox, you will need a Philips screwdriver and flathead screwdriver. If you have Style B, you will need a 4mm Allen wrench and a 10mm wrench, plus a flat head screwdriver.
2. Protect the extractor by placing newspaper or cardboard on top of the extractor and under the gearbox.
3. Remove four (Style A) or two (Style B) screws to **remove the side plate**. If you have Style B, you will need to hold a nut on the opposite side with a wrench.



4. On the inside of the side plate, there will be a metal tab; **bend metal tab up *slightly***, about 1/16." This metal tab rubs on the worm gear, allowing it to lift up and engage with the shaft dog. By bending the metal tab closer to the gear, the shaft dog will engage causing your extractor to spin.
- a. *If the metal tab is worn thin, or has broken off, it needs to be replaced. Betterbee stocks the replacement tabs, which include a mounting screw. The replacement tab part number is:*
Metal tab for Style A Gearbox: part number LYP7 (note that replacing Style A tab requires an 1/8" drill to remove the rivet)
Metal tab for Style B Gearbox: part number LYP8



5. **Reinstall the side plate.** Snug up the screws, but do not overtighten. If you have style B, tighten the screws, and then install the nuts.



6. **Crank the extractor to test.** It should engage within 1/4 turn of the crank. If it still spins freely without engaging, you may need to bend the tab slightly more. *Note: the extractor will always disengage if you spin it quickly and then turn the crank more slowly.*